

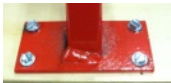
## The safe & affordable install

*Applicable for residential or light commercial installations*



### Quick Stand SPECS QSTD1000

#### A Close Up:



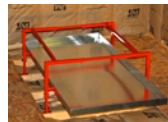
Each foot attaches to wood using 4 zip screws for stability & security.



20 points of anti-vibration isolation are provided using four 50-durometer self adhesive rubber pads & 16 rubber washers.



Each leg individually extends in 1" increments using thumb screws & wing nuts for speed and versatility. Installs as low as 22" on flat or uneven surfaces.



Secondary pan shelf is provided for convenient install & future maintenance.  
\*Drain pan not included.



Our Quick Stand is made of 14-gauge square tubing which not only cuts down on vibration but is also able to hold up to 500lbs.



3 Dimensionally Adjustable:

Height: 12"-22"

Width: 32"-48"

Length: 32"-48"

Quick Stand provides you with a non-swinging, solid platform that is quick, safe, and affordable.

**Patent Pending**