

JOB:
REPRESENTATIVE:

UNIT TAG:

ORDER NUMBER:

DATE:

ENGINEER:

SUBMITTED BY:

DATE:

CONTRACTOR:

APPROVED BY:

DATE:



Series "B" (ASME) Pressurized Expansion Tanks

Not for potable water systems

DESCRIPTION

Series "B" expansion tanks are ASME rated precharged bladder-type pressure vessels. The Series "B" tank is designed to absorb the expansion forces of heating/cooling system water while maintaining proper system pressurization under varying operating conditions. The heavy duty bladder contains system water thereby eliminating tank corrosion and waterlogging problems. All Series "B" tanks include an integral bladder integrity monitor and are available with sight glass and/or seismic restraints.

CONSTRUCTION
System Connection: Malleable Iron

Shell: Carbon Steel

Bladder: Replaceable Heavy Duty Butyl Rubber

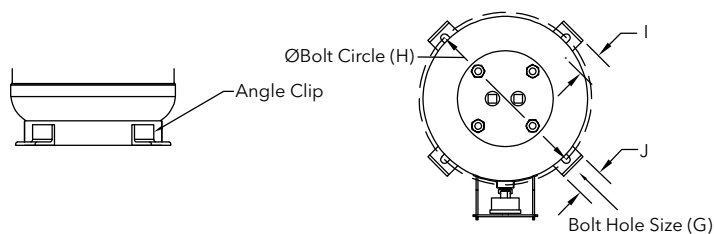
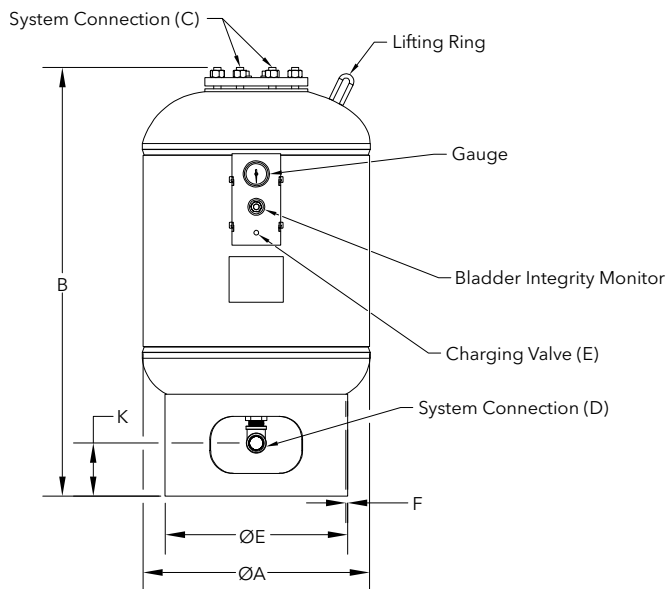
Designed and Constructed per ASME Section VIII, Division 1

MAXIMUM OPERATING LIMITS
Maximum Design Pressure: 125 PSI (862 kPa)

Design Temperature: 240°F (115°C)

SCHEDULE

MODEL	PART NUMBER						
	PRESSURIZED EXPANSION TANKS	WITH SIGHT GLASS	WITH SEISMIC RESTRAINTS	WITH SIGHT GLASS & SEISMIC RESTRAINTS	TANK AND ACCEPTANCE VOLUME GAL (L)	TAGGING INFORMATION	QUANTITY
B35	116477	116511	116533	116561	10 (38)		
B50	116478	116512	116534	116562	13 (49)		
B85	116479	116513	116535	116563	23 (85)		
B100	116480	116514	116536	116564	26 (100)		
B130	116481	116515	116537	116565	34.4 (130)		
B165	116482	116516	116538	116566	44 (165)		



NOTE

Tanks are factory pre-charged at 40 PSI (276 kPa).
Tanks can be installed in the vertical position only.

DIMENSIONS AND WEIGHTS

Model	A in (mm)	B in (mm)	C FNPT	D FNPT	E in (mm)	F in (mm)	G in (mm)	H in (mm)	I in (mm)	J in (mm)	K in (mm)	Shipping Wt. lbs (kg)	Flooded Wt.* lbs (kg)
B35	12 (305)	23.5 (597)	3/4	N/A	10 (254)	0.14 (4)	9/16 (14)	12 (305)	2 (51)	2 (51)	N/A	40 (18)	123 (56)
B50	14 (356)	24 (610)	3/4	N/A	10 (254)	0.14 (4)	9/16 (14)	12 (305)	2 (51)	2 (51)	N/A	50 (23)	158 (72)
B85	16 (406)	37 (940)	3/4	1	12 (305)	0.14 (4)	9/16 (14)	14 (356)	2 (51)	2 (51)	5.5 (140)	90 (41)	273 (124)
B100	20 (508)	31 (787)	3/4	1	16 (406)	0.14 (4)	9/16 (14)	18 (457)	2 (51)	2 (51)	5.5 (140)	103 (47)	320 (145)
B130	20 (508)	37 (940)	3/4	1	16 (406)	0.14 (4)	9/16 (14)	18 (457)	2 (51)	2 (51)	5.5 (140)	125 (57)	408 (185)
B165	24 (610)	34 (864)	3/4	1-1/2	20 (508)	0.14 (4)	9/16 (14)	22 (559)	2 (51)	2 (51)	5.5 (140)	150 (68)	517 (235)

Dimensions subject to change. Not to be used for construction purposes.

*Approximate weight 100% full occurs if bag fails or if air charge is lost.