



# Model RPLF4A **LEAD FREE\***

## REDUCED PRESSURE PRINCIPLE BACKFLOW PREVENTER

Job Name:

Contractor:

Job Location:

P.O. Number:

Engineer:

Representative:

Tag:

Wholesale Distributor:

### SPECIFICATIONS

The 2 1/2" – 12" Reduced Pressure Principle Backflow Preventer shall be an Apollo® **Model RPLF4A Lead Free\***. The assembly shall be manufactured in America and carry a **5-year** Apollo® factory warranty. The TriForce™ center-stem guided check valves shall feature reversible silicone rubber seat discs. The check valves shall be held in place by SS snap-in retainers (2 1/2" – 6") or SS studs & nuts (8" – 12"). Access to the check valves and relief valve internals shall be by an Apollo® quick-connect SS coupling (2 1/2" – 6") or grooved couplings (covers) and SS bolts (relief valves) (8" – 12"). The bodies shall be SS in 2 1/2" – 8" sizes and FDA epoxy coated ductile iron in 10" & 12" sizes. The **Lead Free\*** Apollo® domestic ball valve test cocks shall have SS handles. The assembly shall prevent contamination of the potable water supply due to back-siphonage or backpressure from substances that are health or non-health hazards. The pressure drop across the assembly shall be documented by ASSE or USC FCCC&HR Approval curves.

### FEATURES

- Stainless steel body: 2 1/2" – 8"
- FDA epoxy coated ductile iron body: 10" & 12"
- Easy maintenance – no special tools required
  - Snap-in check retainers: 2 1/2" – 6"
  - Bolted-in checks: 8" – 12"
- Low pressure loss as documented by ASSE or USC FCCC&HR Backflow Preventer approval agencies
- Center-stem guided TriForce™ check valves
- Approved for horizontal flow
- US Patents: 6,443,184; 7,025,085; 7,533,699; 8,240,333
- **Made in the USA – ARRA Compliant**

### PERFORMANCE RATING

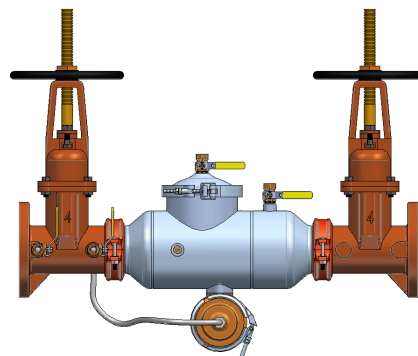
Maximum Working Pressure 175 psi  
Temperature Range 33 ° F – 140 ° F  
Hydrostatic Test Pressure 350 psi

### APPROVALS

Sizes 2 1/2" – 12": ASSE 1013, CSA B64.4, FM, IAPMO, UL\*, cUL\*, and USC FCCC&HR (4" & 6" only)

\*UL and cUL installations must include indicating-type shut-off valves

**\* LEAD FREE:** The wetted surfaces of this product shall contain no more than 0.25% lead by weighted average. Complies with CA AB1953, VT Act 193, MD HB372, LA HB471 and Federal Public Law 111-380.



### ORDERING INFORMATION

**4ALF – 2 X X – 0 X**

Y-STRAINER

SIZE

SHUT-OFF VALVES

#### Y-STRAINER

- ☐ 0 – None (Standard)
- ☐ 1 – With Y-Strainer (Flanged only, shipped loose)

#### SIZE

- ☐ 9 – 2 1/2"    ☐ A – 4"    ☐ E – 8"    ☐ H – 12"
- ☐ 0 – 3"    ☐ C – 6"    ☐ G – 10"

#### SHUT-OFF VALVES (Inlet x Outlet)

- ☐ 1 – Less Shut-off Valves (see notes)
- ☐ 2 – NRS Flg x NRS Flg
- ☐ 3 – OS&Y Flg x OS&Y Flg
- ☐ 4 – OS&Y Flg x Monitored (Mon.) Butterfly Vlv Grv
- ☐ 6 – OS&Y Flg x Post Indicator Flg
- ☐ 7 – OS&Y Flg x OS&Y Grv
- ☐ 8 – OS&Y Grv x OS&Y Grv
- ☐ 9 – Mon. Butterfly Vlv Grv x Mon. Butterfly Vlv Grv
- ☐ 10 – OS&Y Flg x Post Indicator Grv
- ☐ 11 – NRS Grv x NRS Grv
- ☐ 12 – NRS Flg x NRS Grv
- ☐ 13 – Post Indicator Flg x Mon. Butterfly Vlv Grv
- ☐ 14 – Post Indicator Flg x Post Indicator Flg
- ☐ 16 – Mon. Butterfly Vlv Grv x Post Indicator Flg
- ☐ 17 – Post Indicator Flg x Mon. Butterfly Vlv Grv
- ☐ 18 – OS&Y Grv x Post Indicator Grv
- ☐ 19 – Mon. Butterfly Vlv Grv x Post Indicator Grv
- ☐ 20 – Post Indicator Flg x OS&Y Flg

Notes: Post Indicator options not available in 2 1/2" size  
Butterfly options not available in 12" size

#### AIR GAP DRAIN (Optional – See SS1176 for details)

- ☐ AGD4A6 (Fits 2 1/2" – 6")
- ☐ AGD4A8 (Fits 8")
- ☐ AGD4A12IN (Fits 10" & 12")



## Model RPLF4A **LEAD FREE\***

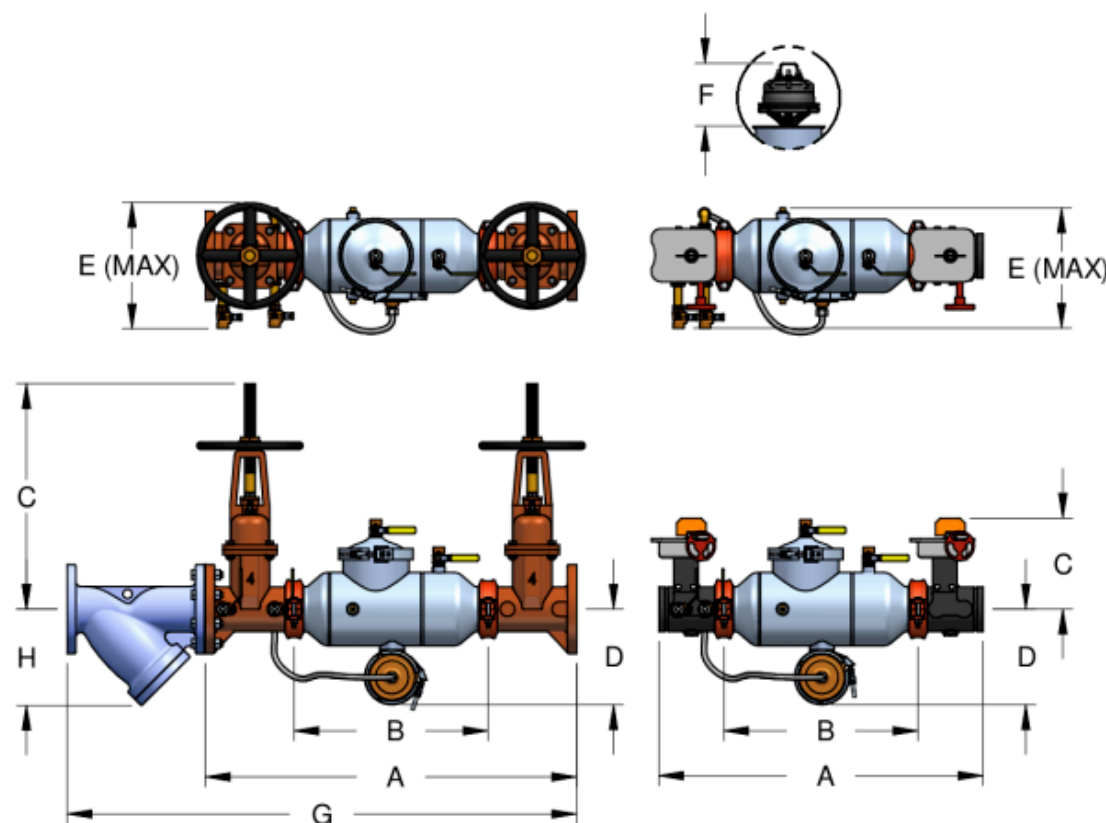
### REDUCED PRESSURE PRINCIPLE BACKFLOW PREVENTER

#### DIMENSIONS (in.) – WEIGHTS (lbs.)

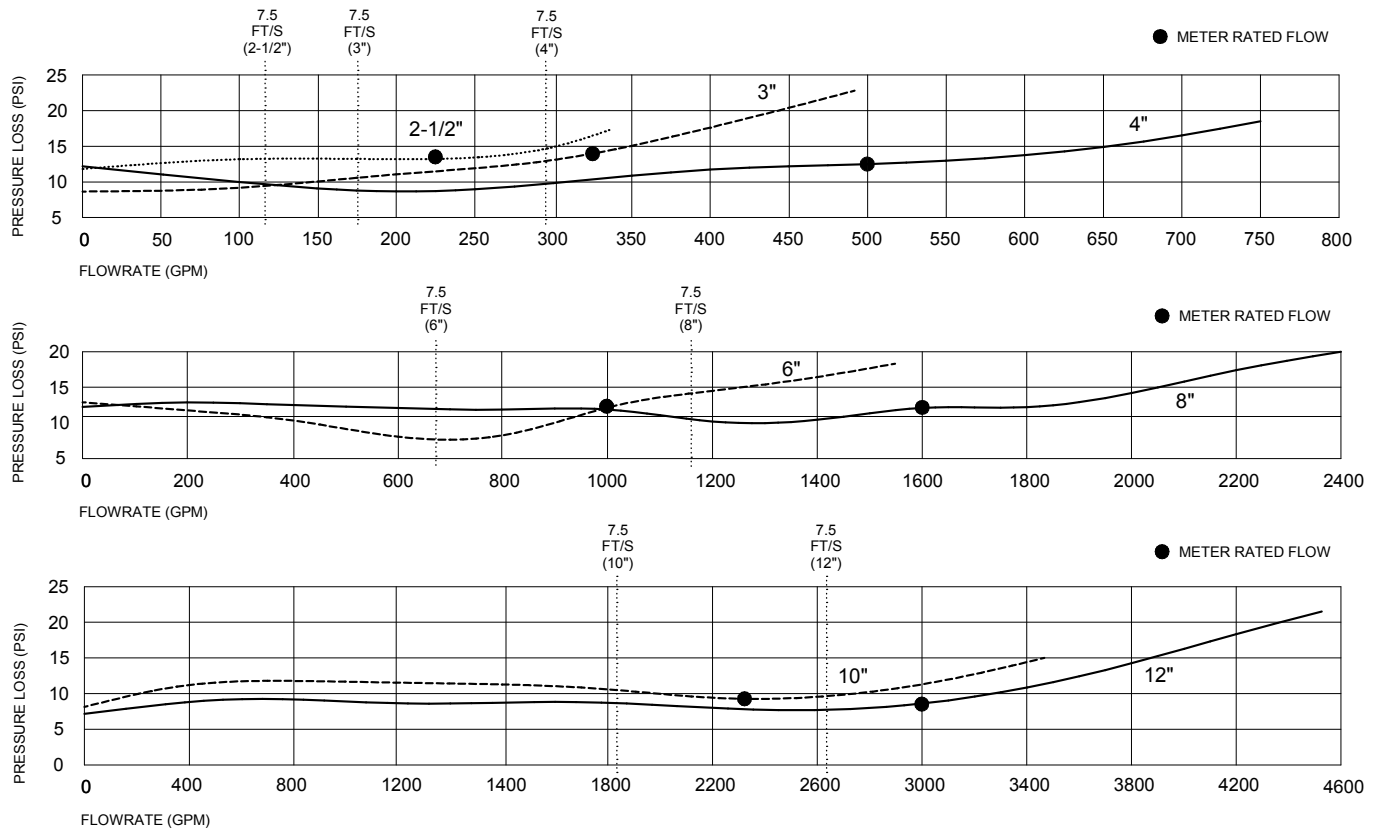
Size	2 1/2"	3"	4"	6"	8"	10"	12"
A (Butterfly Valves)	28 ±	28 1/2 ±	33 1/4 ±	38 7/8 ±	46 3/8 ±	52 1/4 ±	N/A
A (Gate Valves)	31 ±	32 ±	38 ±	45 7/8 ±	53 3/8 ±	62 1/4 ±	65 1/2 ±
B (Less Shut-off Valves)	15 7/8	15 7/8	19 5/8	24 1/2	30	36	37
C (Butterfly Valves)	8	8 3/8	9 1/8	10 1/8	12	13 3/8	N/A
C (NRS/PI Gate Valves)	11 3/8	12 3/8	14 3/4	19	22 1/2	26 1/2	30
C (OS&Y Open)	16 3/8	18 7/8	22 3/4	30 1/8	37 3/4	45 3/4	53 1/8
D	9 5/8	9 5/8	10 3/8	11 5/8	15 5/8	21	21
E (MAX)	11 1/2	12	12 1/2	14 3/8	17 5/8	21	22
F (Check Removal Clearance)	4 3/4	4 3/4	6 1/2	7 1/2	7 1/2	10	10
G	41 7/8	43 5/8	52	64 1/2	74 7/8	88 3/8	95 5/8
H	8	8 3/4	9 1/2	12 5/8	16 3/8	19	22
Test Cocks (NPT)	1/2"	1/2"	1/2"	3/4"	3/4"	3/4"	3/4"
Net Wt. (Less Valves)	31	32	48	84	228	762	865
Net Wt. (w/ Butterfly Valves)	58	62	92	152	359	980	N/A
Net Wt. (w/ NRS Gate Valves)	117	143	197	323	691	1608	2003
Net Wt. (w/ OS&Y Gate Valves)	127	153	203	333	705	1648	2057

#### Notes:

1. Nominal dimensions are shown. Allowances must be made for manufacturers' tolerances (1/8" per joint).
2. Internal body connections are grooved on 2 1/2" – 10" sizes.
3. Internal body connections are flanged on 12" size.
4. Strainer option only available for flanged-end shut-off options.



### FLOW CURVES



### Notes:

- Flow curves directly reflect data collected by an ASSE approved laboratory.
- Flow curves shown were recorded with butterfly shut-off valves. Flow curves with gate valves are slightly lower. Contact factory for more information.
- All data points are based on ASSE increasing flow data, from zero GPM to rated flow (opening curve).
- For high flow rates/pressure loss information – contact factory.

### RPLF4A MATERIAL SPECIFICATIONS

Part Name	Material
Body (2 1/2" – 8")	Stainless Steel
Body (10" & 12")	FDA Epoxy Coated Ductile Iron
Covers (2 1/2" – 6")	Glass-filled PPO/Stainless Steel
Cover (8")	Stainless Steel
Covers (10" & 12")	FDA Epoxy Coated Ductile Iron
Relief Valves (2 1/2" – 12")	Bronze (C89836 Lead Free*)
Check Valves (2 1/2" – 12")	Glass-filled PPO/Bronze (C89836 Lead Free*)/Stainless Steel
Springs	Stainless Steel
Seat Discs	Chloramine-resistant Silicone
Test Cocks	Bronze (C89836 Lead Free*) With Stainless Steel handles