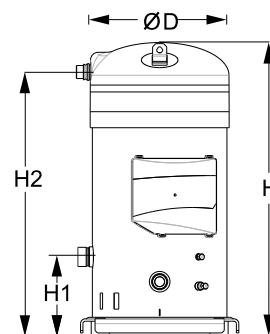


General Characteristics

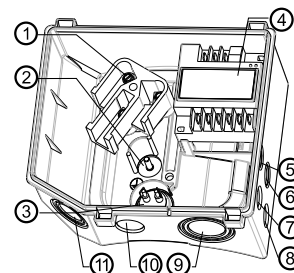
Model number (on compressor nameplate)	SY300A4PAD	SY300A4CAD
Code number for Singlepack*	SY300A4PAI	SY300A4CAI
Code number for Industrial pack**	SY300A4PAM	SY300A4CAM
Drawing number	8556099b	8556094b
Suction and discharge connections	Rotolock	Brazed
Suction connection	2-1/4" Rotolock	1-5/8" ODF
Discharge connection	1-3/4" Rotolock	1-1/8" ODF
Suction connection with supplied sleeve	1-5/8" ODF	
Discharge connection with supplied sleeve	1-1/8" ODF	
Oil sight glass	Threaded	Threaded
Oil equalisation connection	1/2" flare	1/2" flare
Oil drain connection	1/4" flare	1/4" flare
LP gauge port	Schrader	Schrader
IPR valve	Yes	Yes
Reverse rotation protection	Electronic module	Electronic module
Swept volume	437,5 cm ³ /rev	
Displacement @ Nominal speed	76.1 m ³ /h @ 2900 rpm - 91.9 m ³ /h @ 3500 rpm	
Net weight	157 kg	
Oil charge	8 litre, POE - 320SZ	
Maximum system test pressure Low Side / High side	20 bar(g) / 32 bar(g)	
Maximum differential test pressure	24 bar	
Maximum number of starts per hour	12	
Refrigerant charge limit	20 kg	
Approved refrigerants	R22, R407C	

Dimensions


D=344 mm
 H=737,9 mm
 H1=195,7 mm
 H2=665 mm

Electrical Characteristics

Nominal voltage	380-400V/3/50Hz - 460V/3/60Hz
Voltage range	340-440 V @ 50Hz - 414-506 V @ 60Hz
Winding resistance (between phases) +/- 7% at 25°C	0.516 Ω
Rated Load Amps (RLA)	49.3 A
Maximum Continuous Current (MCC)	69 A
Locked Rotor Amps (LRA)	270 A
Motor protection	Electronic protection module, 24 V ac

Terminal box

Recommended Installation torques

Suction Rotolock nut or valve	130 Nm
Discharge Rotolock nut or valve	110 Nm
Oil sight glass	50 Nm
Power connections / Earth connection	3 Nm / 2 Nm
Mounting bolts	40 Nm

Parts shipped with compressor

Mounting kit with grommets and sleeves
Electronic protection module mounted in terminal box
Initial oil charge
Installation instructions

Approvals : CE certified, UL certified (file SA6873), -

*Singlepack: Compressor in cardboard box

**Industrial pack: 4 Unboxed compressors on pallet (order per multiples of 4)

IP54 (with cable gland)

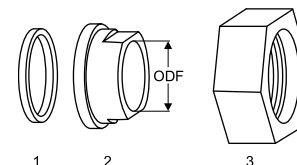
- 1: Power connection, 3 x 4.8 mm (3/16")
- 2: Earth M5
- 3: Thermistor connector
- 4: Electronic protection module
- 5: Double knock-out Ø 22.5 mm (7/8") & Ø 16.5 mm (0.65")
- 6: Double knock-out Ø 22.5 mm (7/8") & Ø 16.5 mm (0.65")
- 7: Knock-out Ø 20.7 mm (0.81")
- 8: Knock-out Ø 20.7 mm (0.81")
- 9: Triple knock-out Ø 50.8 mm (2") & Ø 43.7 mm (1.72") & Ø 34.5 mm (1.35")
- 10: Knock-out Ø 25.5 mm (1.00")
- 11: Triple knock-out Ø 40.5 mm (1.59") & Ø 32.2 mm (1.27") & Ø 25.5 mm (1")

Rotolock accessories, suction side

Code no.

Solder sleeve, P03 (2-1/4" Rotolock, 1-5/8" ODF)	8153006
Rotolock valve, V03 (2-1/4" Rotolock, 1-5/8" ODF)	8168026
Gasket, 2-1/4"	8156133

Gaskets, sleeves and nuts



- 1: Gasket
2: Solder sleeve
3: Rotolock nut

Rotolock accessories, discharge side

Code no.

Solder sleeve, P02 (1-3/4" Rotolock, 1-1/8" ODF)	8153004
Angle adapter, C02 (1-3/4" Rotolock, 1-1/8" ODF)	8168005
Rotolock valve, V02 (1-3/4" Rotolock, 1-1/8" ODF)	8168028
Gasket, 1-3/4"	8156132

Rotolock accessories, sets

Code no.

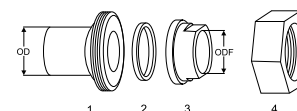
Solder sleeve adapter set, (2-1/4" Rotolock, 1-5/8" ODF), (1-3/4" Rotolock, 7/8" ODF)	7765028
Valve set, V03 (2-1/4"~1-5/8"), V02 (1-3/4"~1-1/8")	7703383
Gasket set, 1-1/4", 1-3/4", 2-1/4", OSG gaskets black & white	8156013

Oil / lubricants

Code no.

POE lubricant, 320SZ, 1 litre can	7754121
POE lubricant, 320SZ, 2 litre can	7754122

Solder sleeve adapter set



- 1: Rotolock adapter (Suc & Dis)
2: Gasket (Suc & Dis)
3: Solder sleeve (Suc & Dis)
4: Rotolock nut (Suc & Dis)

Crankcase heaters

Code no.

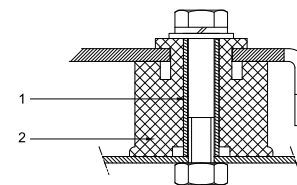
Surface sump heater + bottom insulation, 80 W, 24 V, CE mark, UL	120Z0359
Surface sump heater + bottom insulation, 80 W, 230 V, CE mark, UL	120Z0372
Surface sump heater + bottom insulation, 80 W, 400 V, CE mark, UL	120Z0373
Surface sump heater + bottom insulation, 80 W, 460 V, CE mark	120Z0374
Belt type crankcase heater, 130 W, 230 V, CE mark, UL	7773122
Belt type crankcase heater, 130 W, 400 V, CE mark, UL	7773123

Miscellaneous accessories

Code no.

Electronic soft start kit, MCI 50 CM	7705009
Acoustic hood for scroll compressor S240-S300	7755016
Discharge thermostat kit	7750009

Mounting kit

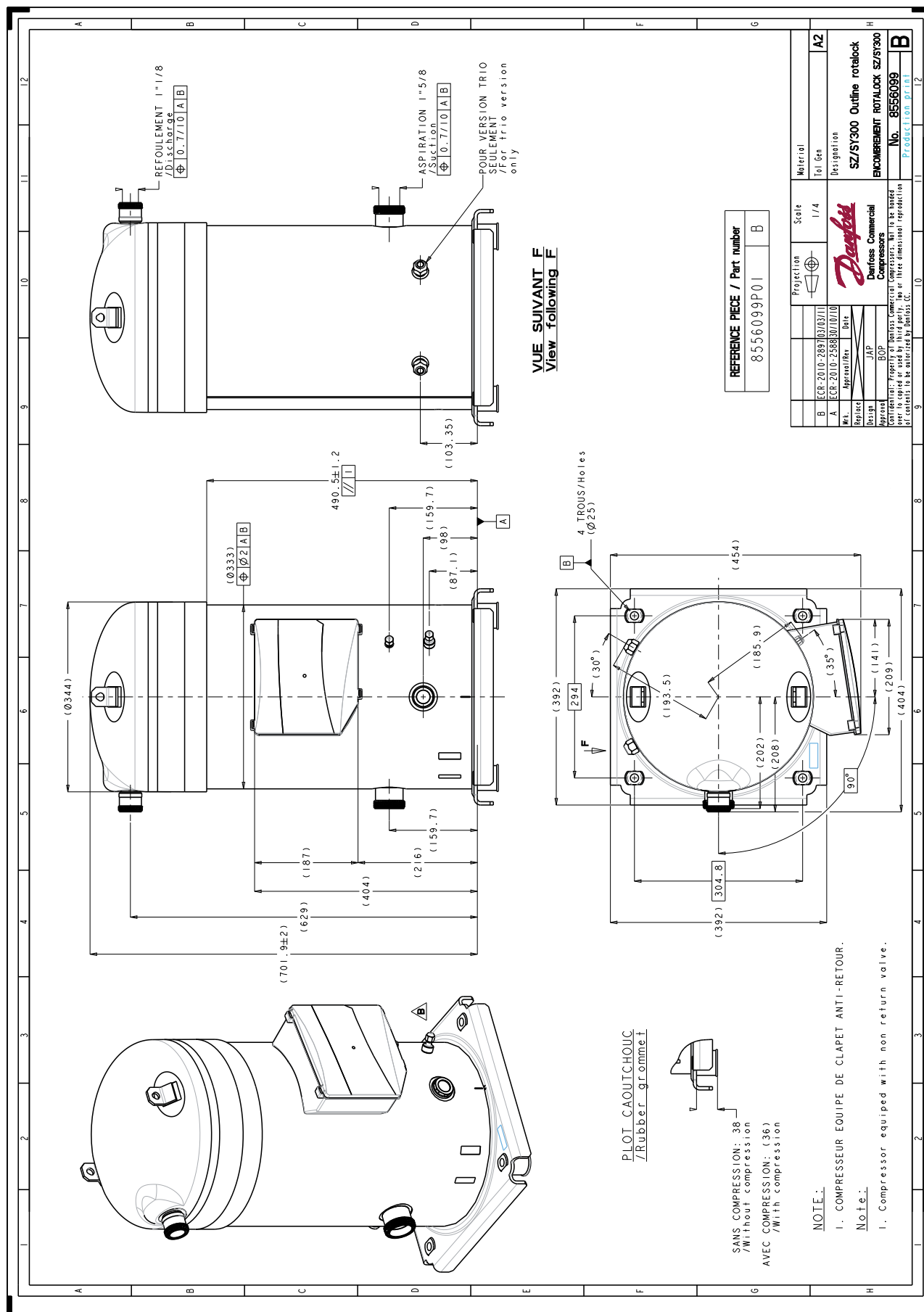


- 1: Sleeve (4x)
2: Grommet (4x)
Bolts, nuts and washers not included

Spare parts

Code no.

Electronic motor protection module, 24 V ac	8169015
Mounting kit for 1 scroll compressor including 4 grommets, 4 sleeves	8156144
Mounting kit for 1 scroll compressor including 4 grommets, 4 sleeves, 2 rotolock nuts, 2 solder sleeves, 2 gaskets	8156148
Oil sight glass with gaskets (black & white)	8156019
Gasket for oil sight glass (white teflon)	8156129
Terminal box 210 x 190 incl. cover	120Z0458
T block connector 60 x 75 mm	8173021



Danfoss can accept no responsibility for possible errors in catalogues, brochures and other printed material. Danfoss reserves the right to alter its products without notice. This also applies to products already on order provided that such alternations can be made without subsequential changes being necessary in specifications already agreed. All trademarks in this material are property of the respective companies. Danfoss, the Danfoss logotype and Maneurop are trademarks of Danfoss A/S. All rights reserved.

