

# PRODUCT INFORMATION PACKET

**FASCO**®

Model No: D291A  
Catalog No: D291A  
Fan Coil & Air Conditioner Motor



Regal and Fasco are trademarks of Regal Rexnord Corporation or one of its affiliated companies.  
©2024 Regal Rexnord Corporation, All Rights Reserved. MC017097E

**RegalRexnord**

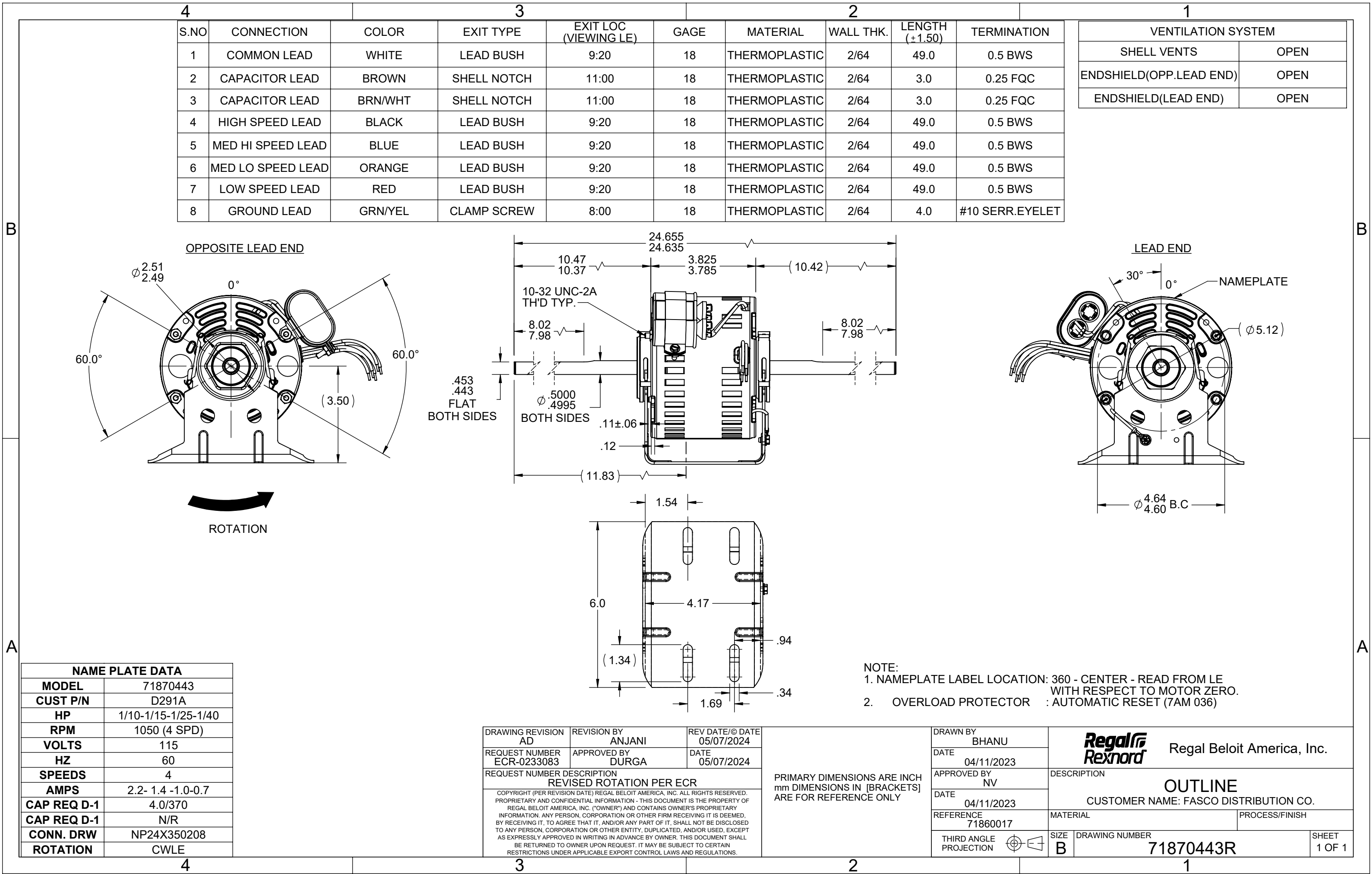
**Nameplate Specifications**

Phase	1	Output HP	1/10,1/15,1/25,1/40 Hp
Voltage	115 V	Speed	1050 rpm
Service Factor	1.0	Frame	42
Enclosure	Open Air Over	Thermal Protection	Automatic
Ambient Temperature	40 °C	Frequency	60 Hz
Current	2.2,1.4,1.0,0.7 A	Duty	Continuous
Insulation Class	B	UL	Recognized
CSA	Y	CE	N
Number of Speeds	4		

**Technical Specifications**

Electrical Type	Permanent Split Capacitor	Starting Method	Across The Line
Poles	6	Rotation	Counterclockwise Lead End
Mounting	Resilient Base	Drive End Bearing	Ball
Opp Drive End Bearing	Ball	Frame Material	Rolled Steel
Shaft Type	Flat	Frame Length	3.83 in
Shaft Diameter	0.500 in	Shaft Extension	10.4X.5X10.42 in
Outline Drawing	71870443R		

This is an uncontrolled document once printed or downloaded and is subject to change without notice. Date Created:05/29/2024



## Winding and Test Specification

**WTS # 82870443-1**

Revision # 1

Rev. Date : Apr 14, 2023

First Made for : 71870443

### WTS Nameplate Data

<b>Horsepower</b>	1/10-1/15-1/25-	<b>RPM</b>	1050(4 SPD)
<b>Voltage</b>	115	<b>Amps</b>	2.20 1.40 1.00
<b>Frequency</b>	60	<b>Phases</b>	1
<b>Capacitor</b>	4.0 $\mu$ fd	<b>Cap Volts</b>	370

Test Volts : 115

Low Spd St Volts : 75

Test Frequency : 60

Test Instructions : 24A105040AA-P1

### Winding

### Resistance

	Min	Nominal	Max
<b>Main *</b>	18.56	19.53	20.51
<b>X Main</b>	7.01	7.38	7.75
<b>Y Main</b>	7.01	7.38	7.75
<b>Z Main</b>	8.91	9.38	9.84
<b>W Main</b>			
<b>Start</b>	98.56	103.75	108.93

### N. L. Performance Data

	Amps	Watts		Cap. Volts
	Nominal	Nominal	Max	
<b>High</b>	1.34	84	101	353
<b>Med. High</b>	0.68	44	53	
<b>Medium</b>				
<b>Med. Low</b>	0.46	29	35	
<b>Low</b>	0.33	21	25	

### Full Load Performance

Amps		Watts		Speed	Torque	
Nominal	Max	Nominal	Max	Nominal	Min	Nominal
1.99	2.19	199	209	1050	9.1	10.1
1.23	1.35	119	125	1050	5.6	6.2
0.84	0.92	79	83	1050	3.8	4.2
0.61	0.67	57	60	1050	2.6	2.9

### Max. Torque

	RPM	Torque	
		Min	Nominal
<b>High</b>	969	9.7	10.7
<b>Med. High</b>		6.0	6.7
<b>Medium</b>			
<b>Med. Low</b>		4.1	4.6
<b>Low</b>		2.9	3.3

### Locked Rotor

Amps	Watts	Torque
Nominal	Nominal	Nominal
3.23	315	2.7
	191	1.6
	128	1.0
	91	0.7

### Customer/Special Load Points

	Speed	Torque		Watts		Amps	
	Nominal	Min	Nominal	Nominal	Max	Nominal	Max
<b>High</b>	1050	9.6	10.1	199	209	1.99	2.19
<b>Med. High</b>	1050	5.9	6.2	119	125	1.23	1.35

	Medium							
	Med. Low	1050	4.0	4.2	79	83	0.84	0.92
	Low	1050	2.8	2.9	57	60	0.61	0.67

\* Large wire size may be double stranded.

Regal Beloit Confidential Information



## Motor Details



<b>Model :</b>	<b>71870443R</b>	<b>Catalog Number :</b>	
<b>General:</b>			
Application :	<b>DIST SALES</b>	Motor Category :	<b>COMPLETE MOTOR</b>
Phases :	<b>1</b>	Production Status :	<b>PROD</b>
# of Speeds :	<b>4</b>	Stock Status :	
Testspec :	<b>82870443-1</b>	Approved For Sale :	
Horiz/Vertical :	<b>HOR</b>	Restricted Model :	
Shell Enclosure :	<b>OPEN</b>	Customer :	<b>DISTRIBUTION SERVICE</b>
Endshield Enclosure :	<b>OPEN</b>	Customer Part# :	<b>D291A</b>

### Nameplate Data:

Horsepower :	<b>1/10-1/15-1/25-1/40</b>	GE Type :	<b>KCP</b>
RPM :	<b>1050(4SPD)</b>	Time Rating :	<b>AO</b>
Voltage :	<b>115</b>	Frequency :	<b>60</b>
FL Amps :	<b>2.2- 1.4 -1.0-0.7</b>	Insulation Class:	<b>B</b>
Capacitor 1mFd/V :	<b>4.00/370</b>	Capacitor 2mFd/V :	<b>N/R</b>
Additional Information :	<b>N/R</b>		

### Miscellaneous:

Fullload RPM - HI :	<b>1050</b>	GE Frame :	<b>42</b>
Poles :	<b>6</b>	Shell Length :	<b>3.375</b>
Rotation :	<b>CW</b>	Drains :	<b>N</b>
Thermal Protection :		Est. Weight :	<b>-10</b>
Finish Color:	<b>STD GRAY</b>	Capacitor By :	<b>RBC</b>

### OVERLOAD INFORMATION::

Protector:	<b>24A100514P11</b>	Overload Temp :	<b>150/140</b>
Catalog No:	<b>7AM036A54838C</b>	Vendor Name:	<b>TEXAS INSTRUMENTS</b>

### THERMAL CUT-OFF INFORMATION:

TCO:	<b>N/A</b>	Overload Temp :	<b>N/A</b>
Catalog No:	<b>N/A</b>	Vendor Name:	<b>N/A</b>

### U.L.CONSTRUCTION FILES:

Motor Construction:	<b>E46035(excluding SME)</b>	Class B Insulation :	<b>E306343(excluding SME)</b>
Over Load :	<b>E27885(excluding SME)</b>	CSA(REY) :	<b>MC236833(excluding SME)</b>

### Shaft:

PE Type :	<b>FLAT</b>	OPE Type :	<b>N/R</b>
PE Length :	<b>10.42</b>	OPE Length :	<b>10.42</b>
PE Diameter :	<b>.5</b>	OPE Diameter :	<b>.5</b>
PE Flat Length :	<b>8</b>	OPE Flat Length :	<b>8</b>

### Endshields:

PE Material :	<b>AL</b>	OPE Material :	<b>AL</b>
PE Hub Type :	<b>STD</b>	OPE Hub Type :	<b>STD</b>
PE Oiler :	<b>N/R</b>	OPE Oiler :	<b>HOLE</b>
PE Oil Plug :	<b>N/R</b>	OPE Oil Plug :	<b>N/R</b>
PE Mounting Holes :	<b>N/R</b>	OPE Mounting Holes :	<b>N/R</b>

### Bearings:

PE Bearing Type :	<b>BALL</b>	OPE Bearing Type :	<b>BALL</b>
Bearing Protection :	<b>No</b>	Rohs Compliant :	<b>No</b>

### Mounting:

Base :	<b>RB</b>	Lug :	<b>N/R</b>
Clamp Screw :	<b>Yes</b>	Weld Screw :	<b>No</b>
<b>Base:</b>			
Type :	<b>STD 29</b>	Height :	<b>3.5</b>
Reversed :	<b>Y</b>	Assembly Angle :	<b>360</b> degrees CW from Oil boss viewed from OPE of the motor.

### Extended Clamp Screws:

PE Pattern :  
PE Length : **0.11**  
PE Nut Qty : **1**  
Head End : **OPE**  
Nut Thickness : **.12**

OPE Pattern :  
OPE Length : **N/R**  
OPE Nut Qty : **0**  
Screw Size : **#10**

**Lead & Cord :**

Lead End : **OPE**      Lead Type : **SINGLE COND**  
Lead Exit H/W : **NYLON GROMMET**      Lead Harness Desc : **N/R**  
Lead Exit H/W : **STD**  
Orient. :

**Note :** Exit position is viewed from the Lead End with the Shell Weld at 6:00.

**Grounding :**

Type : **BASE**      Location : **8:00** viewed from **OPE** with Oil boss at 12:00  
Exit Type : **CLAMPSCREW**      AWG Size : **18**  
Length : **4.00**      Color : **GRN-YEL**  
Terminal : **#10 SERRATED**      Ins.Material &  
                 **EYELET**      Thickness **2/64 THRMOPLAST**

**Diagrams and Dimensions :**

Outline Drawing : **71870443R**      C-Dimension : **24.65**  
Connection Diagram : **24B200217 Fig# 2**      Connection Label : **NP24X350208**

**Notes :**

**This document is the property of the Regal Beloit Company containing proprietary and confidential information.**

Date of last revision : **26-DEC-23**

