



ET1105C

ET1725CPD82

ET8415CR

ET1100, ET1700, ET8000 Series

Basic Electronic Time Switches

This series offers an easy way to upgrade from a basic mechanical time switch to an electronic time switch. These timers will allow for up-to-the-minute programming, battery backup for power loss, 14 ON/OFF events per circuit, and automatic daylight saving time corrections without the need of user interaction. They come in standard 24-hour, 7-day, and 7-day astronomic (sunrise to sunset) versions.

Applications

- Interior lighting • Exterior lighting • Electric pumps
- Electric motor control • Various other electrical loads

Features

- Selector switch to determine input voltage between 120-277 VAC, 50/60 Hz
- 14 ON/OFF events per circuit
- To-the-minute accuracy
- Temporary override or permanent manual override
- Automatic Daylight Saving Time adjustment
- Astronomic models enable dusk-to-dawn scheduling

24-Hour Schedule

Model #	Enclosure
1-Circuit SPST Switch	
ET1105CM	—
ET1105C	Indoor Type 1 Metal
ET1105CPD82	Outdoor Type 3R Plastic
ET1105CR	Outdoor Type 3R Metal
1-Circuit SPDT Switch	
ET1115CM	—
ET1115C	Indoor Type 1 Metal
ET1115CPD82	Outdoor Type 3R Plastic
ET1115CR	Outdoor Type 3R Metal
2-Circuit SPST Switch	
ET1125CM	—
ET1125C	Indoor Type 1 Metal
ET1125CPD82	Outdoor Type 3R Plastic
ET1125CR	Outdoor Type 3R Metal

7-Day Schedule

Model #	Enclosure
1-Circuit SPST Switch	
ET1705CM	—
ET1705C	Indoor Type 1 Metal
ET1705CPD82	Outdoor Type 3R Plastic
ET1705CR	Outdoor Type 3R Metal
1-Circuit SPDT Switch	
ET1715CM	—
ET1715C	Indoor Type 1 Metal
ET1715CPD82	Outdoor Type 3R Plastic
ET1715CR	Outdoor Type 3R Metal
2-Circuit SPST Switch	
ET1725CM	—
ET1725C	Indoor Type 1 Metal
ET1725CPD82	Outdoor Type 3R Plastic
ET1725CR	Outdoor Type 3R Metal

7-Day Astronomic Schedule

Model #	Enclosure
1-Circuit SPST Switch	
ET8015CM	—
ET8015C	Indoor Type 1 Metal
ET8015CPD82	Outdoor Type 3R Plastic
ET8015CR	Outdoor Type 3R Metal
1-Circuit SPDT Switch	
ET8115CM	—
ET8115C	Indoor Type 1 Metal
ET8115CPD82	Outdoor Type 3R Plastic
ET8115CR	Outdoor Type 3R Metal
2-Circuit SPST Switch	
ET8215CM	—
ET8215C	Indoor Type 1 Metal
ET8215CPD82	Outdoor Type 3R Plastic
ET8215CR	Outdoor Type 3R Metal
4-Circuit SPST Switch	
ET8415CR*	Outdoor Type 3R Metal



Ratings	
Input Voltage	120/208/240/277 VAC, 50/60 Hz
Resistive	20 A, 28 VDC; 30 A, 120/240 VAC
Inductive	30 A, 120/240 VAC
Magnetic Ballast	20 A, 120-277 VAC
Tungsten	5A, 120-240 VAC
Motor	1 HP, 120 VAC; 2 HP, 240 VAC
Operating Temperature	-40° F to 104° F (-40° C to 40° C)
Wiring Terminals	#14 to #8 AWG
MIN ON/OFF Times	1 minute
MAX ON/OFF Times	Indefinite
Warranty	1-year limited

Selection Guide

Scan the QR code with your smartphone or tablet for a side-by-side comparison of our electronic control features.



Note: The electronic mechanism snaps into the standard Intermatic enclosure for easy upgrading of mechanical mechanisms, if desired.

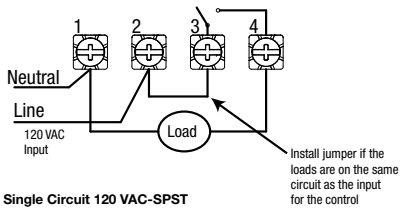
** ET8415CR is UL Listed and includes automatic voltage detection between 120-277 VAC, 50/60Hz.*

Enclosure	
Enclosure Dimensions H x W x D	
Metal Indoor	7 7/8" x 5 1/8" x 3 3/8" (200 mm x 130.2 mm x 87.3 mm)
Plastic Outdoor	10" x 6 1/2" x 4" (254 mm x 165.1 mm x 101.6 mm)
Metal Outdoor	10 1/8" x 6 1/2" x 3 3/8" (257.2 mm x 165.1 mm x 92.1 mm)
Knockout Dimensions	
Side/Back	(1) 1/2" and 3/4" combination
Bottom	(2) 1/2" and 3/4" combination

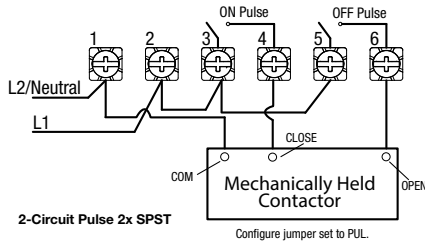
For enclosure line drawings and knockout locations, see pages 164-165.

ET1100, ET1700, ET8000 Series

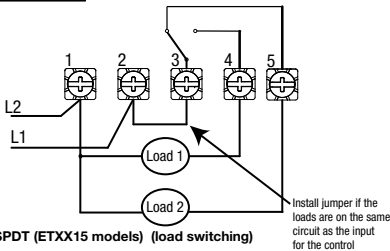
Timer Power



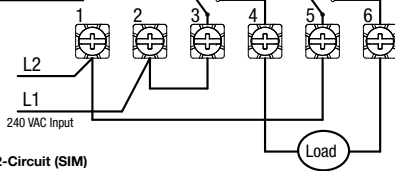
Timer Power



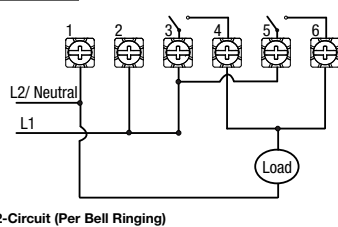
Timer Power



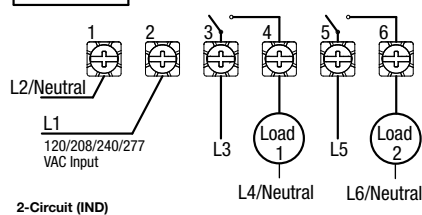
Timer Power



Timer Power



Timer Power



ET8415CR Wiring Diagrams

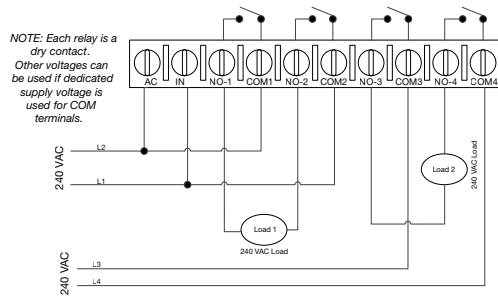
There are many different ways to set the relays on the ET8415CR Time Switch. The four relays can be used individually or in pairs of two. Refer to the table below for a complete list of ways to set the relays and illustrations for some of the common wiring installations.

Possible switching configurations		
IND/IND	SIM/IND	PUL/IND
IND/SIM	SIM/SIM	PUL/SIM
IND/PUL	SIM/PUL	PUL/PUL

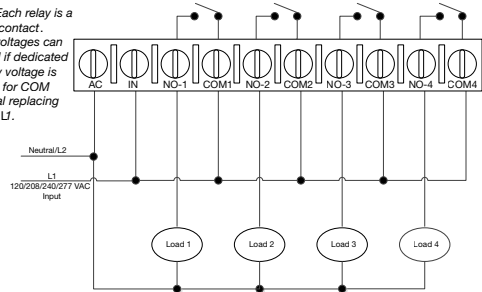
Note:
IND= Independent SIM= Simultaneous PUL= Pulse

2x DPST

Operation Mode set to SIM for both sets of contacts, input and output voltage are the same.



NOTE: Each relay is a dry contact. Other voltages can be used if dedicated supply voltage is used for COM terminal replacing L1.



2x Pulse

Operation mode set to PUL for both sets of contacts, each ON and OFF event for circuit 1 will ring the bell. Each ON event for Circuit 3 will close contactor and each OFF event will open contactor.

NOTE: Each relay is a dry contact. Other voltages can be used if dedicated supply voltage is used for COM terminals.

