

## COMBUSTION AIR INDUCER REPLACEMENT KIT

### INSTALLATION INSTRUCTIONS FOR COMBUSTION AIR INDUCER REPLACEMENT KIT (602107-01; 44W29) USED ON TG/KG 048, 060, 072 GAS PACKAGED UNITS

#### Shipping and Packing List

##### Package 1 of 1 contains:

- 1- Combustion air inducer assembly

##### Bag assembly containing:

- 5-#10 Sheet metal screws
- 1-Gasket
- 1-Relay
- 1-Wiring harness
- 1-Wiring diagram

#### Application

This kit replaces a 3-wire combustion air inducer with a 4-wire combustion air inducer. Kit is used on KG/TG 048, 060, 072 units with two-stage high heat (150KBtuh).

### ⚠ WARNING

Improper installation, adjustment, alteration, service or maintenance can cause property damage, personal injury or loss of life. Installation and service must be performed by a qualified installer, service agency or the gas supplier

### ⚠ CAUTION

Danger of sharp metallic edges. Can cause injury. Take care when servicing unit to avoid accidental contact with sharp edges.

#### Installation

- 1- Turn off all power and gas supply to unit.
- 2- Open the compressor and heat section access panels. See figure 1.
- 3- Locate K72 relay to the right of the A3 ignition control. See figure 2. Disconnect wiring to K72 except for the wires to relay coil terminals A and B.
- 4- Disconnect wires to K72-A & B and connect to the same terminals on the kit relay.
- 5- Remove and discard K72 relay; install the relay provided in the kit in the same location.

11/08

- 6- Disconnect wire labeled K1-L2 routed to K1-L2 on compressor contactor. See figure 2.
- 7- Route disconnected wires through 7/8" hole in divider panel. See figure 1. Cut wire ties as needed.
- 8- Disconnect J19/P19 connector in heat section. Remove and discard J19 harness.
- 9- Place kit harness J19 connector near P19 connector in the heat section. Route harness wires from the heat section through the 7/8" hole in the divider panel to the control panel area. See figure 1.
- 10- Connect harness wires to the new K72 relay, K1-2, and A3 as shown in figure 3.

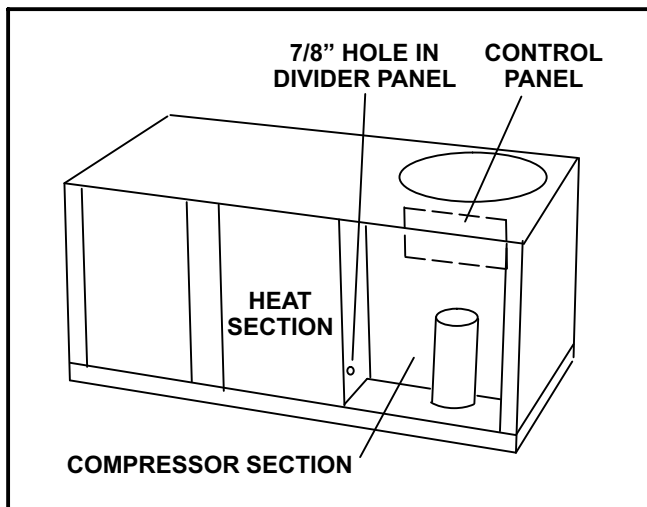


FIGURE 1

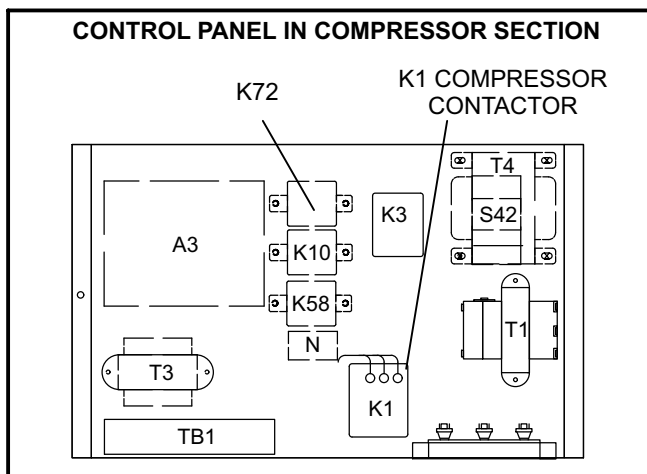
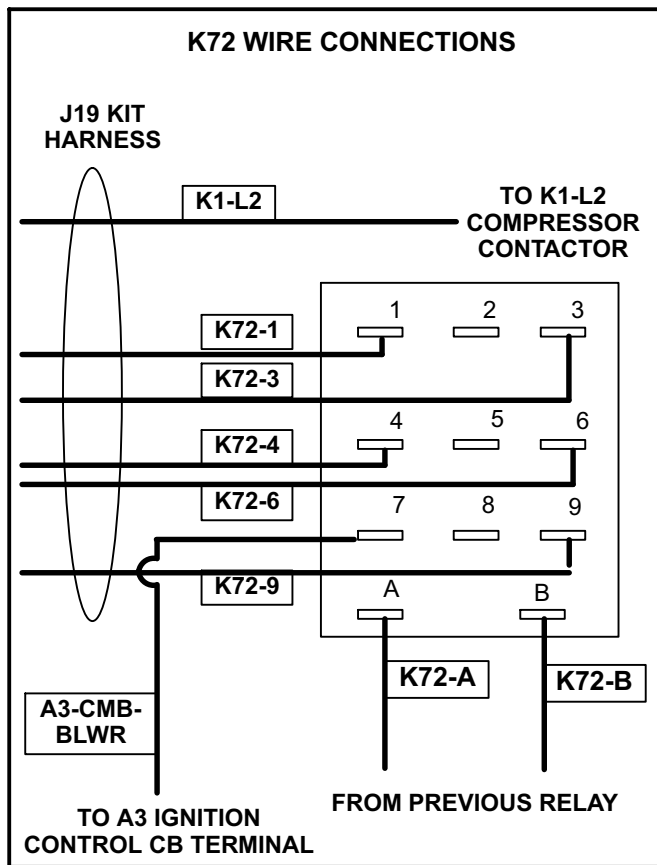


FIGURE 2

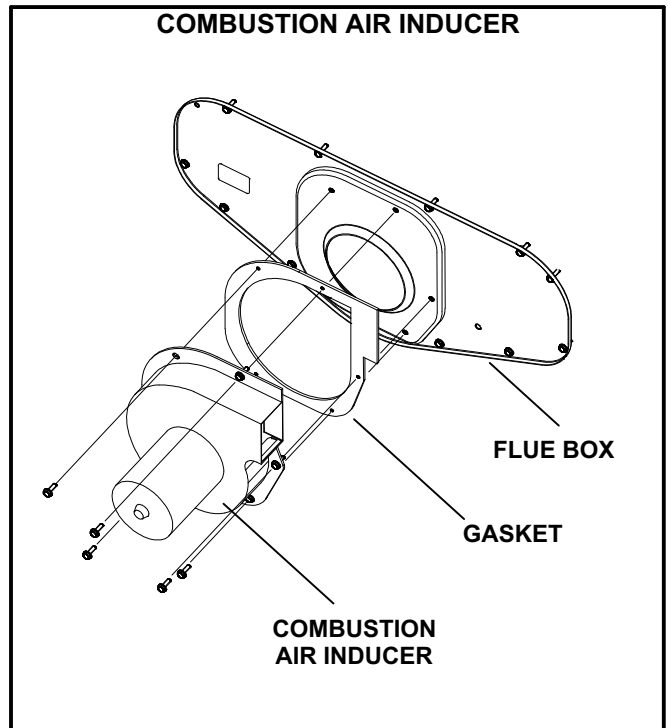
506160-01



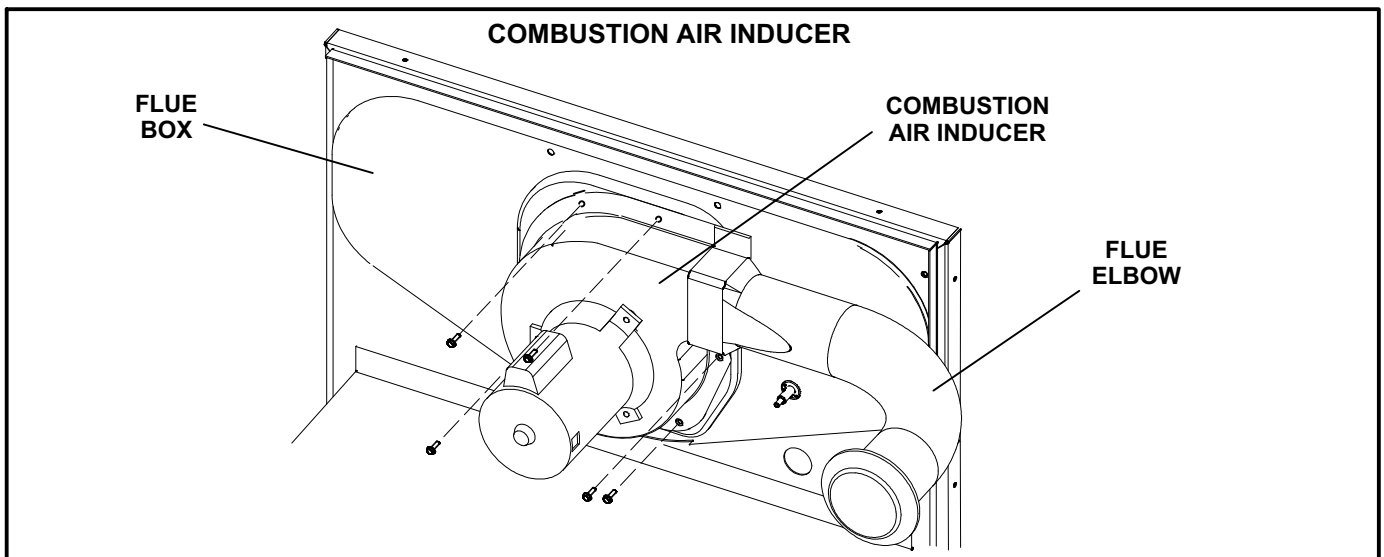
**FIGURE 3**

- 11- Remove screws securing combustion air inducer to flue box. Remove combustion air inducer. See figure 5.
- 12- Remove flue elbow from combustion air inducer and set aside.
- 13- Fit flue elbow onto replacement combustion air inducer.

- 14- Install replacement combustion air inducer and gasket. See figure 4. Secure with screws provided in kit.
- 15- Connect jack/plug to combustion air inducer.
- 16- Bundle wiring and secure away from unit components.
- 17- Affix kit wiring diagram over gas heat diagram on inside of unit panel.
- 18- Replace access panels and connect power and gas. Start unit and verify heating operation as shown in unit installation instruction.



**FIGURE 4**



**FIGURE 5**